

e-news Healthtalk

26 November 2004



Recruitment for the second tier management positions is now underway

New structure approved

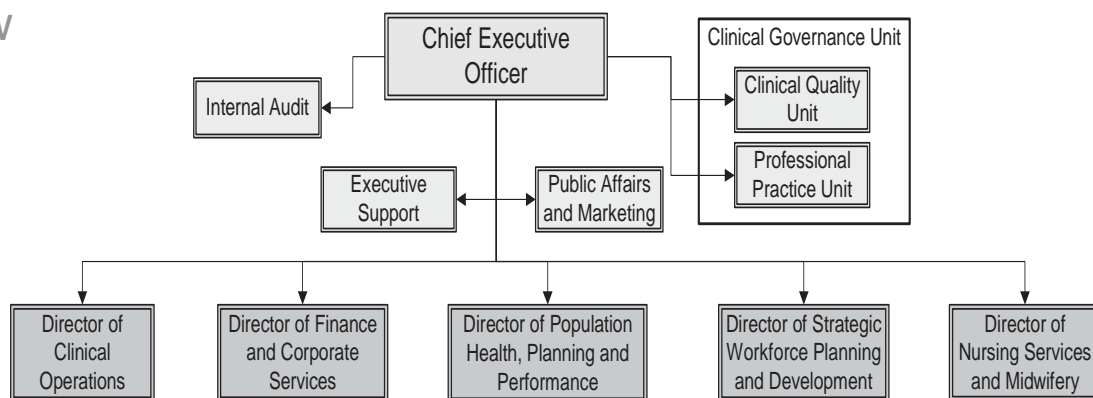
Since the last Healthtalk e-news, decisions on new structures and senior staff appointments within the new area have progressed.

NSW Health has approved the top layer of our new area structure – the graph of the new structure is below.

The second tier appointments to the new service have now been advertised.

For the convenience of displaced executives, advertising and recruiting are being handled centrally by NSW Health but the final decisions will be made at a local level.

The positions will be internally advertised within NSW Health and, in the interests of fairness, there will be one round of interviews only.



International search for nurses

Nurses across the two areas have joined working parties, marketing strategy and clinical practice groups to discuss and formulate plans for the new health service.

As part of an overseas recruitment drive in conjunction with NSW Health and scheduled for January 2005, nursing staff from CSAHS and SWSAHS have been working on the development of a recruitment brochure and website.

This joint marketing group has met every two weeks and, within a short timeframe, has done an outstanding job in the production of the new materials.

In the area of policy development, joint working parties from the two areas continue to review nursing policies, roles and clinical practice. The recommendations of the working parties will be presented to senior management for incorporation into the merger plans.



sydney south west health

Numbers news



The merger of the finance departments of the two areas is proceeding apace and director of Finance Candy Cheng says the cooperation between the two areas has been fantastic.

Ms Cheng said that systems and procedures were being reviewed in both areas with the aim of incorporating best practice modality in the new area.

The location of the new finance department office is still under discussion.

“The financial management of the individual hospitals will remain under the same badging but will be consolidated for standard reporting purposes,” Candy said.

“This will be a great opportunity for staff to broaden their skills and experience.

“After all, we’ll be working for an entity with an annual expenditure of \$2 billion. In effect, we may appear on the BRW 500 list.

“It’s a big organisation with a lot of positives and the opportunity for people to carve out a good career.”

Area health advisory councils

NSW Health Minister Morris Iemma is encouraging the community and the medical workforce to apply for Area Health Advisory Council membership and have a say in the running of their local health service.

“This is a great opportunity for members of the community and clinicians, including doctors, nurses and allied health professionals, to have a greater say in the planning and delivery of health services at both state and local levels,” Mr Iemma said.

“I encourage all those seeking to take part in the development of area health

Flat on our faces

On a recent amalgamation visit to RPA, three nameless, technically incompetent and very grateful SWSAHS staffers were saved from a wayward tyre by the kind intervention of fleet manager Scott Brown and contractor Frank’s Automotive. Many thanks to the guys at RPA!

New appointments

Most of the new clinical co-directors of SWSAHS have been announced.

The latest appointments are Anthony Schembri, clinical co-director Allied Health and Clinical Support Services; Dr Bruce French, clinical co-director Cardiovascular Services; Associate Professor Brad Frankum, clinical co-director Complex and Primary Care Services; and Dr Andrew McDonald, clinical co-director Child, Youth and Family Services.

Expressions of interest for the Nursing and Auxiliary Services co-director roles will be sought shortly.

The Area is in discussion with the Nurses Association and will move to fill these vital roles as soon as possible.

service policies, plans and initiatives to apply.”

The new Area Health Advisory Councils provide an important opportunity for clinicians and community members to work in partnership to represent all health stakeholders. These representatives will then directly advise the chief executive of each area health service.

Applications for Area Health Service Advisory Council membership, which close on Friday 26 November, can be made online or downloaded from the NSW Health website: <http://www.health.nsw.gov.au/pbh/councils.html>.



Fighting cancer together



More than 5000 people will be diagnosed with cancer each year in the new area. In addition, over 20,000 people living with cancer may require ongoing treatment, monitoring and support.

Because the management of cancer is a complex undertaking involving many service providers, organisation of cancer services to meet patient needs is a major challenge.

As part of the amalgamation strategy, CSAHS clinical director Professor Chris O'Brien and SWSAHS clinical director Dr Martin Berry are consulting with colleagues from the two areas.

"The consultative method is the best way to determine who does what and how we can achieve the best patient outcomes," Dr Berry said.

"It is the clinicians who are best placed to identify the issues affecting patients and what issues must be addressed in the new service strategy," he said.

A steering committee is working on the development of a discussion document which will include recommendations for cancer services amalgamation.

"Our intent is to focus on the provision of different specialised services at targeted hospitals in the new area and to avoid any duplication of services," Professor O'Brien said.

"If you require a specialised service in the area, for example radiation oncology, you will go to the clinical centre of excellence in the area for that service," Professor O'Brien said.

"It's all about mapping out strategies to decide who does what in the new and reinvigorated health area," Dr Berry concluded.

Following on SWSAHS's successful pilot of NSW's first clinical cancer registry, the Cancer Institute of NSW has invited the area to apply to become a lead site for the area clinical cancer registry.

The new area stands to benefit from these major initiatives of the Cancer Institute of NSW to build capacity to deliver care.

These initiatives will include the appointment of cancer lead clinicians across the area as well as funding for psychosocial support and care coordination.

Corporate Records head south-west

The consolidation of the two areas is proceeding apace with the centralisation of the Executive Support Unit and Corporate Records at the area office at Liverpool.

SWSAHS Executive Support Unit manager Nel Buttenshaw is preparing to welcome two Central Sydney corporate records staffers to the new centralised unit.

They have already met their south-western counterparts and are looking forward to working from the Liverpool offices.

Training on the records system in use at Liverpool, the Total Records

Information Management system, will be provided for the relocated staffers.

Under the new structure, Corporate Records will report through Executive Support.

The Executive Support Unit website can now be accessed by all staff in the combined areas and, with the introduction of the combined telephone directory on 16 November, we will truly begin to think and act as one area health service.

And then there's the public face of the new area – Executive Support is writing to all our business and medical partners to let them know our new mail and street address in Liverpool.

Administrator's update



The new logo
will be ready
for use at the
start of
January

sydney south west health

CENTRAL SYDNEY AREA
HEALTH SERVICE



The first few weeks since the announcement of my appointment as chief executive of Sydney South West Health have been full of activity.

During this time we have made a great deal of progress with the new structure and decisions on new senior staff appointments in SSWH.

Most of the new clinical co-directors of SWSAHS have been announced. You can read about the latest appointments in this edition of Healthtalk.

Our two public affairs units are working with me and senior management on the design of our new corporate identity and logo. The logo, which will centre on the new name, and other branding material will be ready for use at the start of January.

All SWSAHS and CSAHS staff have been invited to attend their area annual general meetings.

The SWSAHS annual general meeting was held at the Auditorium, Thomas & Rachel Moore Education Centre, Liverpool Hospital on Thursday 25 November.

The CSAHS annual general meeting will be held at Canterbury Hospital on Friday 26 November at 3pm.

One of the most pleasing aspects of my new role has been the opportunity to continue to meet a broad cross-section of the staff in the new area.

I spoke to staff and took questions from the floor at the Meet the Administrator forums at Campbelltown Camden and Bowral hospitals in the past two weeks.

These well attended forums proved to be effective and frank exchanges of practical information. Question and answer sessions have proved to be a good way to get to know one another.

In the weeks since the last *Healthtalk e-news*, I've taken the opportunity to talk to some of our local newspapers,

promote the new area health service and reassure the community that they will continue to receive excellent care at their local hospitals.

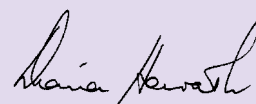
I addressed a meeting of visiting medical officers at RPA and attended the opening of the Medical Foundation Transplantation Unit at RPA, the first Australian research unit dedicated to helping transplant patients survive the need for long-term immunosuppressant therapy. Gene therapy research has been supported by a grant of \$600,000 from the Medical Foundation of the University of Sydney.

In November, I opened a gynaecological forum at RPA. This was one in a series of forums with Liverpool and RPA working together on the joint development of clinical services. The forums are conducted under the auspices of the Greater Metropolitan Transition Task Force.

During the month, I attended the inaugural meeting of the Asbestos Research Institute Advisory Board at Concord Hospital. The institute - a collaboration between trade unions, industry and the hospital - is recruiting a director who will operate as a conjoint chair with the University of Sydney. The institute will investigate asbestos related diseases.

This year, the annual RPA Foundation medal was awarded to Professor Warwick Britton for his work on tuberculosis. In the new year, Professor Britten will take over from Professor Daniel Celermajer as RPA Director of Research.

This month has also seen the final builders' handover of the new clinical services block at RPA.



Dr Diana Horvath AO
Administrator